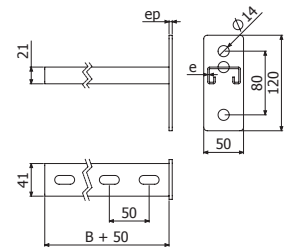


SP2

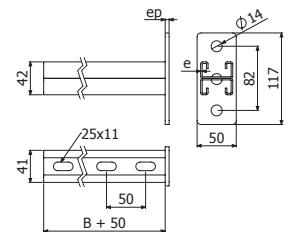

	B		e	ep	CTA		GC	
	mm	inch	mm	mm	kg	lb	REF.	kg/ud
SP2 100	100	4"	2	4	165	364	2/8778	0,53
SP2 200	200	8"	2	4	141	311	2/8779	0,61
SP2 300	300	12"	2	4	117	258	2/8780	0,88

- B1 (2/4356-EZ / 2/6826-GC) + DIN9021 M6 (2/7023-EZ / 2/7022-i304)
- CFBFR41 (2/10284)
- DIN933 M8x25 (2/17546-i304) + TAD M8 (0/0494-EZ)


SPD2


	B		e	ep	CTA		GC	
	mm	inch	mm	mm	kg	lb	REF.	kg/ud
SPD2 200	200	8"	2	4	325	717	2/8781	1,07
SPD2 300	300	12"	2	4	265	591	2/8782	1,40
SPD2 400	400	16"	2	4	230	508	2/8783	1,73

- CFBFR41 (2/10284)
- DIN933 M8x25 (2/17546-i304) + TAD M8 (2/17558-EZ) + BFE (2/0863-GC)


SP

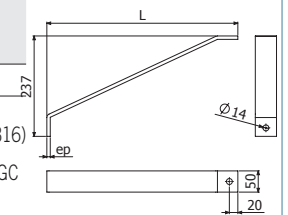
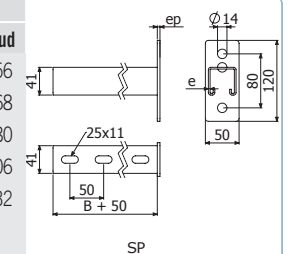

	B		e	ep	SP		SP+REF		GC		e	i304		i316	
	mm	inch	mm	mm	kg	lb	kg	lb	REF.	kg/ud	mm	REF.	kg/ud	REF.	kg/ud
SP 100	100	4"	2,5	4	350	772	-	-	2/6495	0,58	2	2/18128	0,56	2/18462	0,56
SP 150	150	6"	2,5	4	350	772	-	-	2/4939	0,71	2	2/18129	0,68	2/18463	0,68
SP 200	200	8"	2,5	4	350	772	-	-	2/4733	0,84	2	2/18130	0,80	2/18464	0,80
SP 300	300	12"	2,5	4	290	640	-	-	2/4734	1,11	2	2/18131	1,06	2/18465	1,06
SP 400	400	16"	2,5	4	250	552	724	1597	2/1036	1,38	2	2/18132	1,32	2/18466	1,32
SP 500	500	20"	2,5	4	220	486	592	1306	2/1037	1,64	2				
SP 600	600	24"	2,5	6	200	441	501	1105	2/4938	1,91	2				
SP 800	800	32"	2,5	6	-	-	383	845	2/1038	2,44	2				
SP 1000	1000	40"	2,5	6	-	-	310	684	2/5086	3,06	2				
R450	450	18"	-	8	-	-	-	-	2/7325	1,77	-				

TF41 PVC (2/5627)

- ISO7380 M6x25 (2/17582-EZ / 2/17601-i304) + TM41 M6 (2/17556-EZ / 2/8225-GC / 2/18593-i316)
- CFBFR41 (2/10284) / ISO7380 M6x25 (2/17582-EZ / 2/17601-i304) + SSC (2/2064-EZ / 2/0363-GC / 2/0373-i304 / 2/18553-i316) + TM41 M6 (2/17556-EZ / 2/8225-GC / 2/18593-i316)
- DIN933 M10x30 (2/17547-i304 / 2/17600-i316) + BFE M10 (2/0864-GC / 2/18531-i304 / 2/18532-i316) + TM41 M10 (2/17584-GC / 2/18525-i304 / 2/17612-i316)



TF41



R450